



BSRN Meeting, 26-29 Apr 2016, Canberra

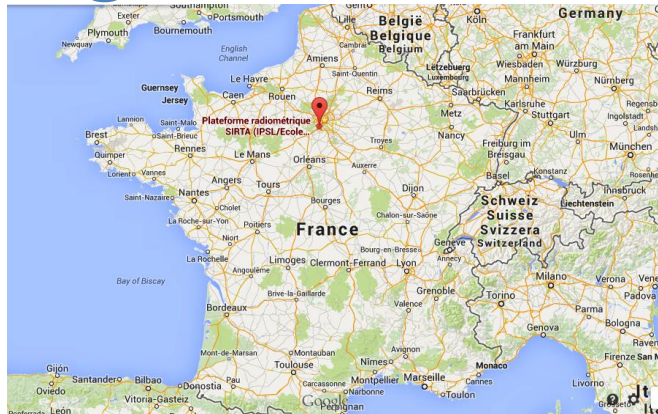
# BSRN station PAL at SIRTA Observatory, Paris Region: status and news

Station scientists: Jordi Badosa, Martial Haeffelin, Jean-Charles Dupont,  
Technical staff: Marie-Christine Gonthier, Christophe Boitel, Marc-Antoine  
Drouin, Florian Lapouge,

LMD/IPSL, Ecole Polytechnique



# Station PAL, Paris region, France

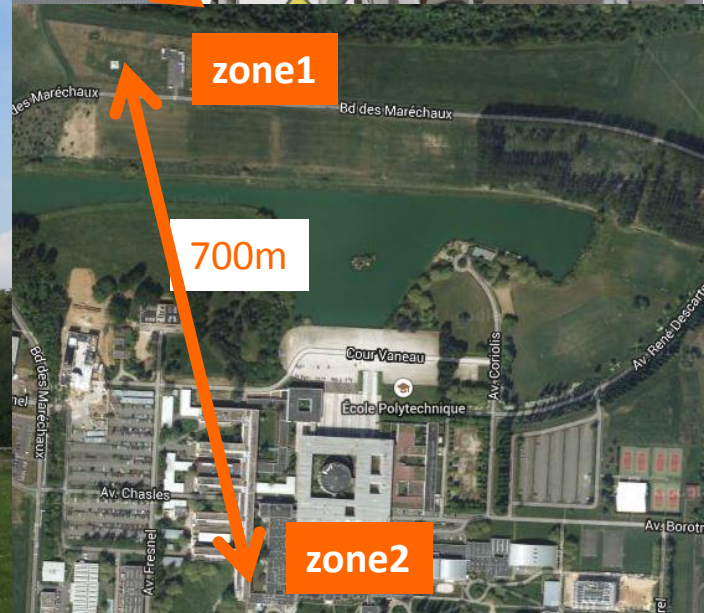
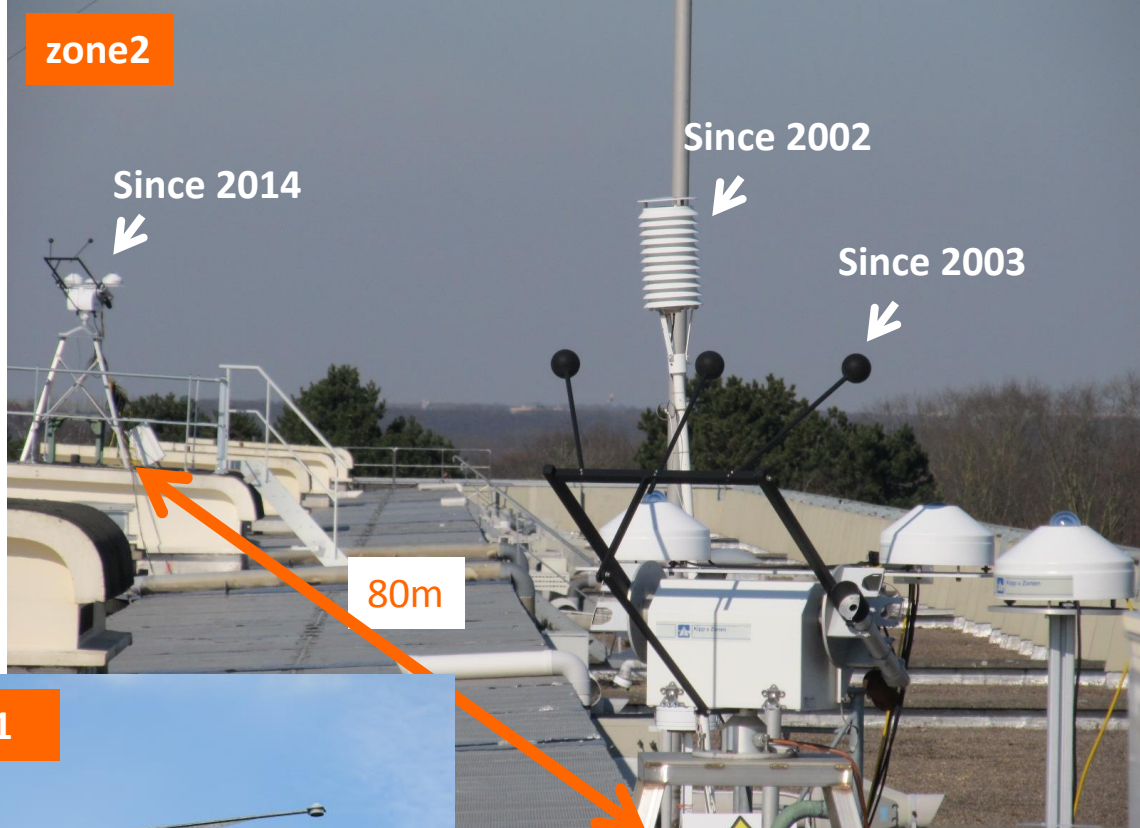


Contribution to BSRN since 2003.

Current available parameters in BSRN archive :

- SWDn (DIF, DIR, GLO), LWDn
- Air temperature, RH, pressure

The new installation in 2014 will become reference for the site.



# Future BSRN-related actions for 2016-2017

- Complete BSRN archive using the data from the new station
- Performing quality control for downwelling/upwelling flux station, and submit to BSRN archive.



Contacts:



Martial Haeffelin

[martial.haeffelin@ipsl.polytechnique.fr](mailto:martial.haeffelin@ipsl.polytechnique.fr)

Jordi Badosa

[jordi.badosa@lmd.polytechnique.fr](mailto:jordi.badosa@lmd.polytechnique.fr)



# More than 20 radiative-related sensors are currently operating.



1999

CIMEL  
Sunphotometer



2010-12

UVS-AE-T,  
UVS-B-T,



2010

SPN1 (x2)



2012

PQS-1



2014

SP Lite2



2014

6 PV panels  
(I-V, T)

2014

MS-700 (350-  
1050nm)

## Contacts:



Martial Haeffelin  
[martial.haeffelin@ipsl.polytechnique.fr](mailto:martial.haeffelin@ipsl.polytechnique.fr)



Jordi Badosa  
[jordi.badosa@lmd.polytechnique.fr](mailto:jordi.badosa@lmd.polytechnique.fr)