

# Battery Replacement Instructions for Automated PSU's



**1. Disconnect the unit from the power supply**



**2. Remove cover from the electronics box inside the unit using a short Phillips head screwdriver**

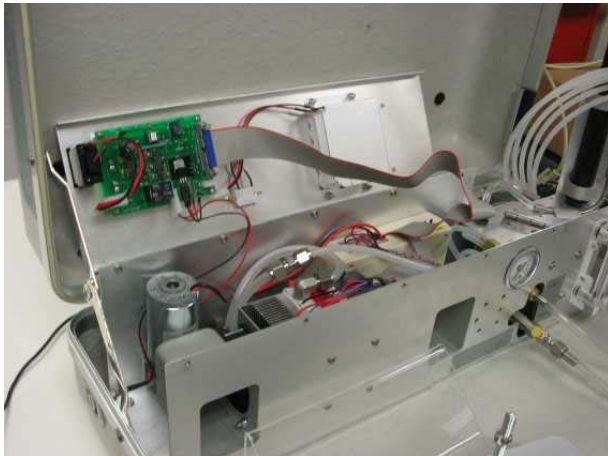


Remove 5 front screws

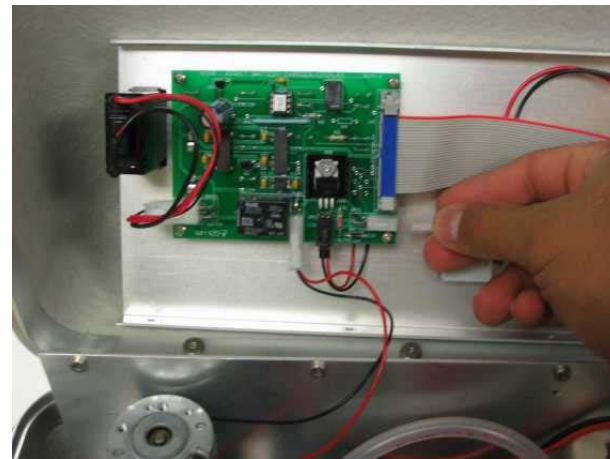
Remove 5 rear screws



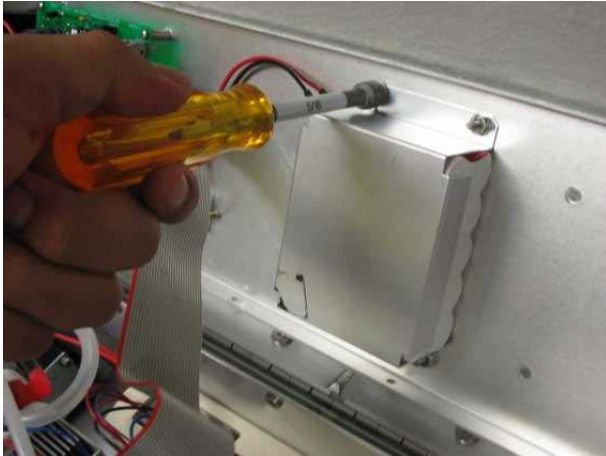
**3. Lift the cover and rest it as in picture below**



**4. Disconnect battery pack from charger circuit board**



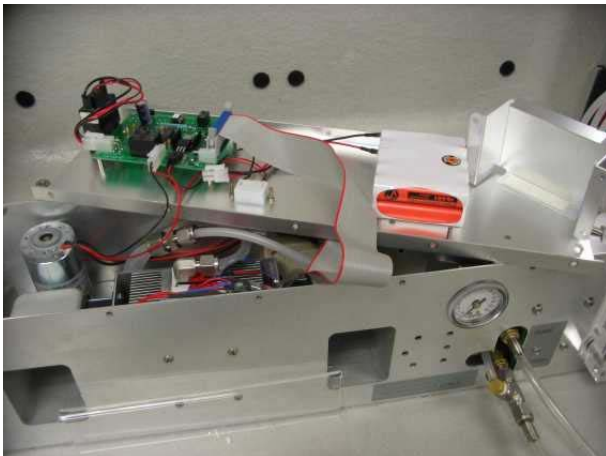
**5. Remove 4 battery hold-down nuts using a 5/16" nut driver**



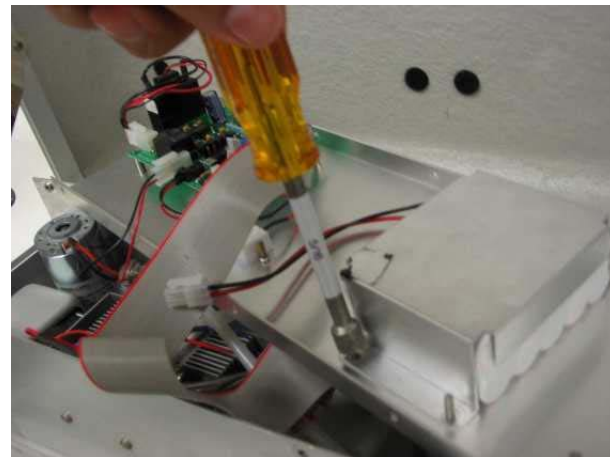
**6. Remove old Ni-MH battery**



**7. Place new Ni-MH battery on cover as shown below and connect it to charger circuit board**



**8. Replace 4 battery hold-down nuts**



**9. Replace front and rear screws**

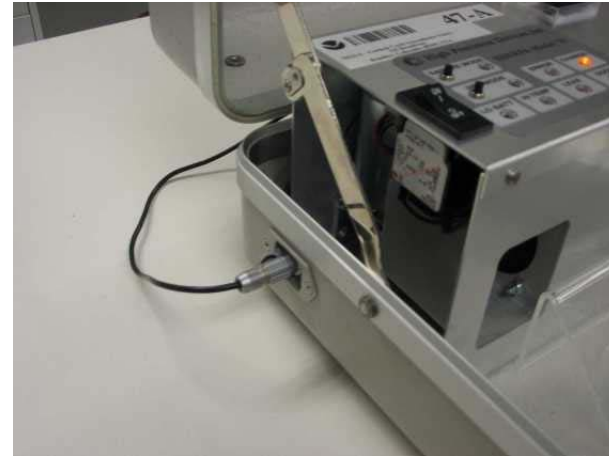


Replace 5 front screws



Replace 5 rear screws

**10. Connect unit to power supply**



**11. Make sure the charge light comes on**



**12. Charge the battery for 8 hours before collecting a sample. The charge light goes out when the battery is fully charged.**